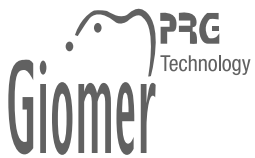


BEAUTIFIL II

The 2nd Generation Giomer
Aesthetic Dental Restorative Material



BEAUTIFIL II

BEAUTIFIL II the 2nd generation Giomer light-cure fluoride releasing direct aesthetic restorative material was developed using S-PRG Technology (Surface Pre-Reacted Glass-ionomer) to provide superior aesthetics with excellent shade match, enhanced handling characteristics and anti-plaque effect while maintaining strength and durability.

Created for ...

Direct restorations that require optimum aesthetics and biocompatibility such as

- *Direct cosmetic tooth modifications*
- *Restoration of Class III, IV, and V cavities*
- *Restoration of cervical erosion and root caries*
- *Restoration of Class I and selective Class II cavities*
- *Repair of fractured incisal edges*
- *Laminate veneers and core build-up*

Confidence starts here...



Photographs courtesy of Dr. Sushil Koirala

Predictable Aesthetics

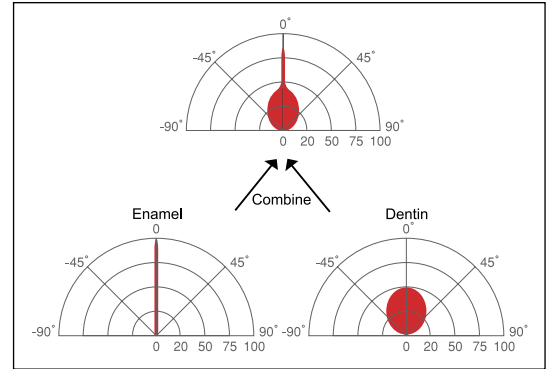
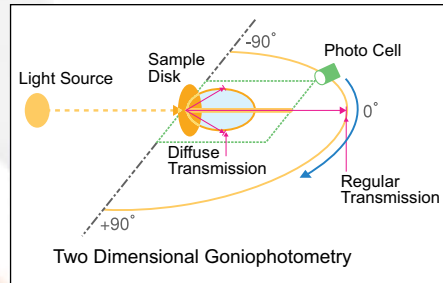
Create Indistinguishable restorations with optical characteristics of natural teeth...

The BEAUTIFIL II filler structure has been developed to simulate the internal structure of natural teeth with ideal light transmission and optical characteristics.

The moderate translucency and light transmission of enamel combined with the light-diffusion of dentin offers predictable aesthetics with a close shade match to natural teeth.



Photograph courtesy of Dr. Sushil Koirala



Versatility...

Excellent natural shade reproduction can be achieved with a chameleon effect, using a single shade that blends well with surrounding teeth making the restoration undetectable. In aesthetically demanding cases additional shades can be used to achieve exceptional results.

Shades...

BEAUTIFIL II is available in 14 shades – A1, A2, A3, A3.5, A4, B1, B2, B3, C2, C3, Inc, BW and Opacious Dentin shades (A20, A30)

Recommended Use of Shades

Universal shades – A1, A2, A3, A3.5, A4, B1, B2, C2 Designed specially for the single shade restorative technique

Opacious Dentin shades – A20, A30 Specially created for restoration with layering technique using multiple shades

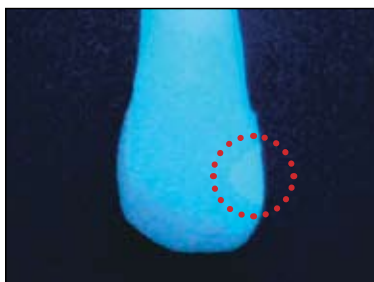
Enamel shade – Inc Unique Incisal shade with high translucency for aesthetically demanding cases

Bleach White shade – BW Ideal for restoring bleached teeth



The shade guide is made with actual BEAUTIFIL II material and uniquely designed to simulate the thickness of natural teeth to ensure a precise shade match.

Fluorescence close to natural teeth



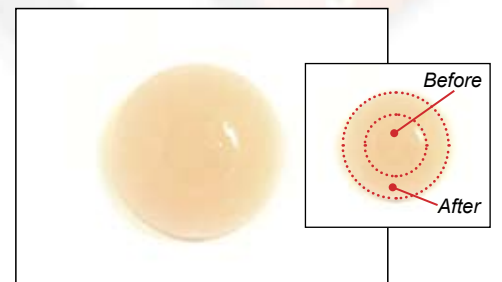
Exceptional Radiopacity

1.7 times of Enamel and 3 times higher than Dentin



Shade Stability

Negligible difference in shade before and after curing



Optimum Polishability

In addition to the S-PRG fillers discrete nano fillers (10~20nm) have been included in the filler structure of BEAUTIFIL II to obtain a filler load of 83.3 wt% for fast and easy polishing with an outstanding surface lustre which retains over time.

Outstanding Handling Characteristics

Excellent handling has been achieved with the inclusion of nano particles making BEAUTIFIL II a user-friendly material that is easy to sculpt with no slump, non-sticky and wets preparation well with good thixotropic qualities.

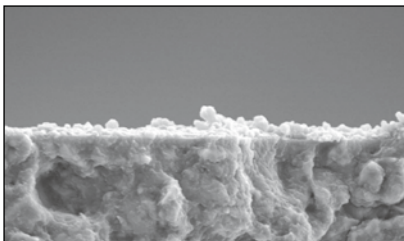
The “One Touch Cap” of the syringe has been enhanced for easy dispensing and delivery during build-up of restoration.



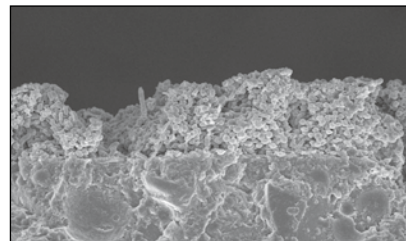
Anti-Plaque Effect

On the surface of a tooth restored using BEAUTIFIL II a “material film” layer is formed by saliva that is reported to minimize plaque adhesion and inhibit bacterial colonization.

Although this “material film” layer may be removed by brushing, subsequent layers are reproduced by saliva therefore S-PRG filler has a function of inhibiting plaque accumulation.



BEAUTIFIL II
(with S-PRG filler)
sporadic plaque
formation



Conventional
Composite Resin
(with no S-PRG filler)
proliferated plaque
formation

Photographs courtesy of Prof. Koji Yamamoto of the ASAHI University.

Dependable Strength and Durability

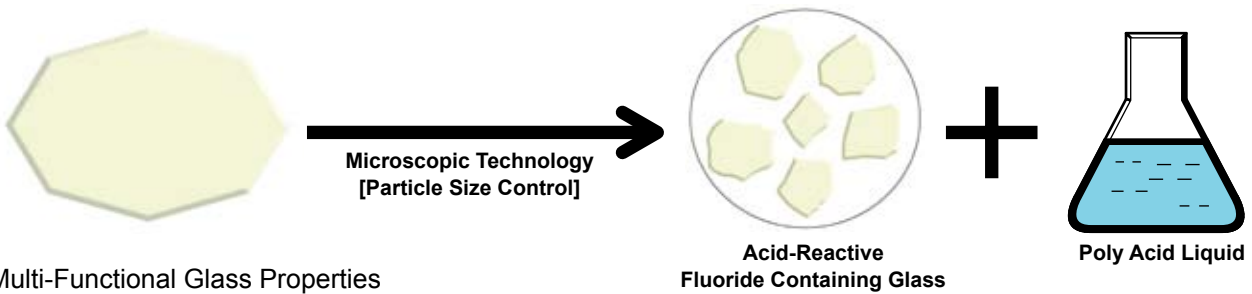
The internal structure of BEAUTIFIL II with a high filler load ensures long-term stability under rigorous intra-oral conditions combined with high flexural strength for universal application.

Physical Properties

- Flexural Strength 130 Mpa
- Vickers Hardness 62 Hv
- Wear Resistance 0.52 wt%
- Filler Load 83.3 wt%
- Depth of Cure 5.9 mm
- Radiopacity 3.4 Al : mm
- Fluoride Release & Recharge Yes

“Giomer Concept”

Based on the PRG (Pre-Reacted Glass-ionomer) technology where a stable phase of glass-ionomer is formed to incorporate added benefits such as fluoride release and recharge to the restorative material without causing material degradation.

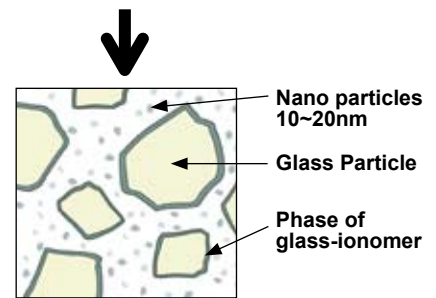


Multi-Functional Glass Properties

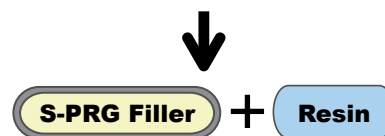
- Same hardness as enamel
- High radiopacity, low refractive index
- High water resistance without dissolution

S-PRG TECHNOLOGY

Glass-ionomer reaction on the surface only



S-PRG Filler

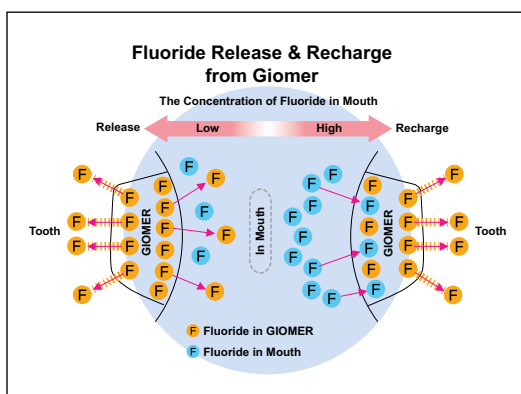


PRG Technology
Giomer

BEAUTIFIL II

Properties of S-PRG Technology

- Maintaining the property of multifunctional glass
- High level of radiopacity
- Properties of glass-ionomer
 - Fluoride release and recharge
 - Biocompatibility
- Long term clinical stability
- Shade conformity (optical property)
Aesthetics close to natural teeth
- Resistance to wear of posterior teeth
- Anti-plaque effect



Significant Fluoride Release & Recharge

S-PRG Filler (Surface Pre-Reacted Glass-ionomer) contains a stable phase of glass-ionomer with the ability to release and recharge fluoride responding to the concentration of fluoride in the mouth while maintaining the strength and stability of a composite resin.

Order Information



**BEAUTIFIL II
6 COLOR SET:**
6 x Beautifil II
Syringe, 4.5gm
A2, A3, A3.5,
B2, A30, Inc,
Dura-White
Stone, Super-
Snap Singles,
OneGloss Trial
Set & Paper Pad



**BEAUTIFIL II
COSMETIC SET:**
3 x Beautifil II
Syringe, 4.5gm-A2,
A3, Inc, Beautifil
Opaquer-LO,
Beautifil Flow F02-
A2, Dura-White
Stone, Super-Snap
Singles, OneGloss
Trial Set & Paper
Pad



**REFILLS:
Shades:**
A1, A2, A3, A3.5,
A4, B1, B2, B3, C2,
C3, Inc, BW, A20,
A30



**BEAUTIFIL II
Shade Guide Set**

Related Products



BeautiBond Set



FL-BOND II Complete Set



**BEAUTIFIL Flow F02 & F10
BEAUTIFIL Opaquer - UO & LO**



Super-Snap Rainbow Set



One-Gloss Set



CompoMaster CA



SHOFU INC. 11 Kamitakamatsu-cho, Fukuine, Higashiyama-ku, Kyoto 605 - 0983, Japan (www.shofu.co.jp)
 SHOFU INC. Singapore Branch. 10 Science Park Road, #03-12 The Alpha, Science Park II, Singapore 117684 (www.shofu.com.sg)
 SHOFU DENTAL SUPPLIES (SHANGHAI) CO. LTD. No.645 Jiye Road, Sheshan Industry Park Songjiang Shanghai 201602, China (www.shofu.com.cn)
 SHOFU DENTAL CORPORATION 1225 Stone Drive, San Marcos, CA 92078-4059, USA (www.shofu.com)
 SHOFU DENTAL GmbH Am Brüll 17, 40878 Ratingen, Germany (www.shofu.de)
 SHOFU DENTAL PRODUCTS LTD. Dukes Factory, Chiddingstone Causeway, Tonbridge, Kent, TN11 8JU, UK (www.shofu.co.uk)
 SHOFU is a registered trademark of SHOFU INC. All other trademarks and registered trademarks are the property of their respective holders. SHOFU INC. reserves the right to change specifications without notice.
 © Copyright 2001 SHOFU INC. All rights reserved.